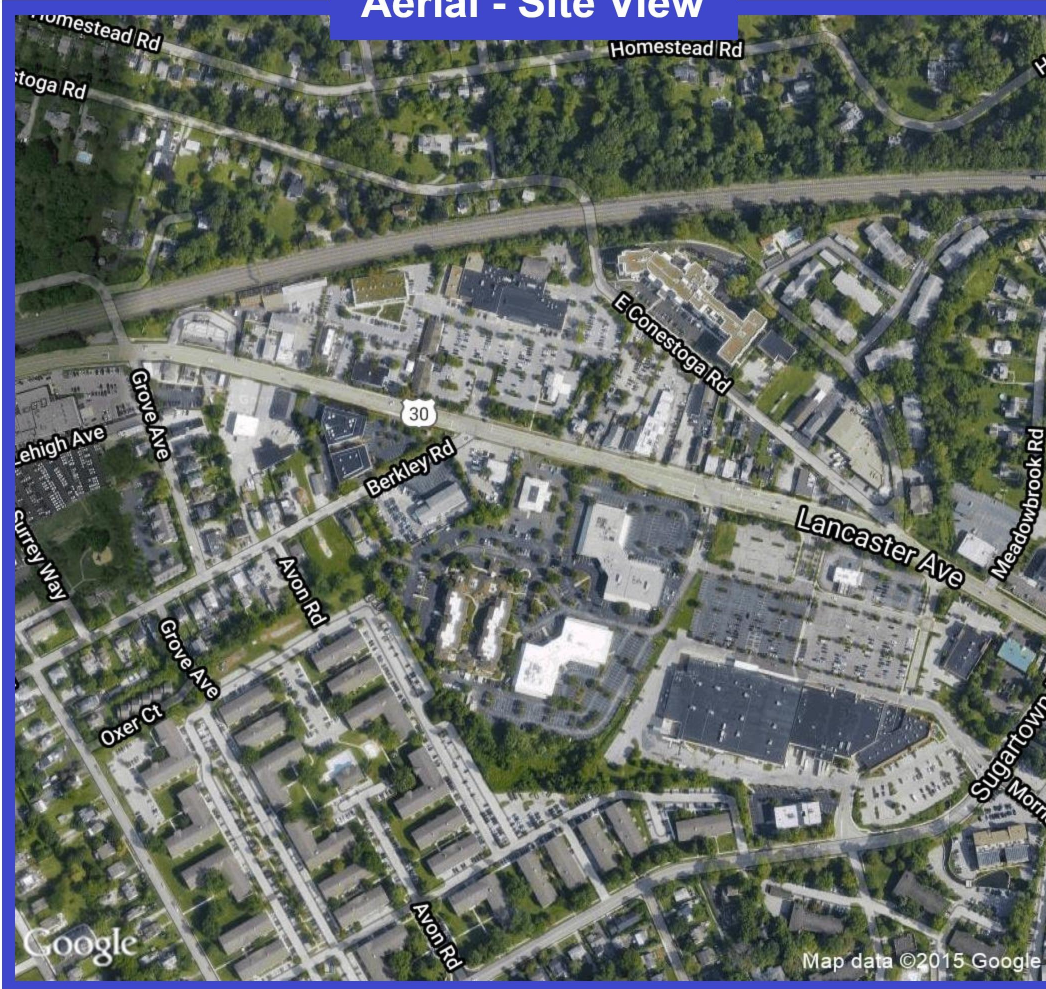
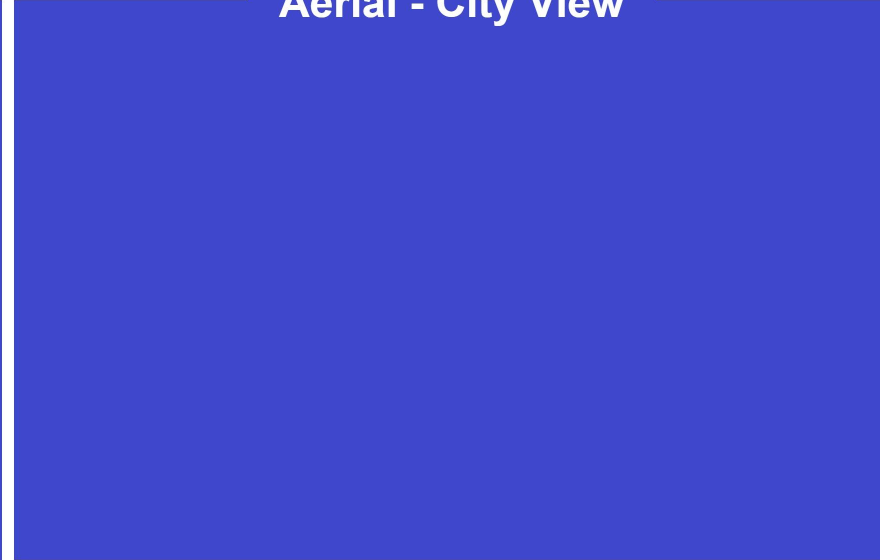


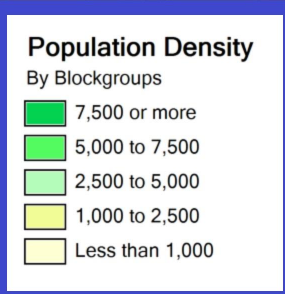
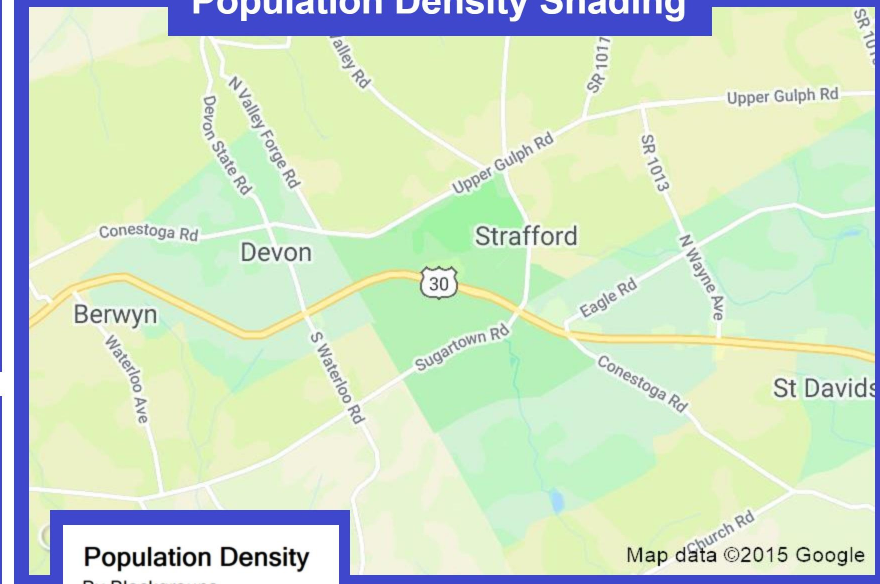
Aerial - Site View



Aerial - City View



Population Density Shading



Demographic Data	1 mi radius	3 mi radius	5 mi radius
Population (2020)	9,909	48,712	131,074
Households (2020)	4,143	19,201	52,225
Median household income (2020)	\$134,340	\$138,239	\$123,997
Total Employees	4,753	56,058	121,012
Total Establishments	577	3,886	9,047

This map was produced using data from private and government sources deemed to be reliable. The information herein is provided without representation or warranty.