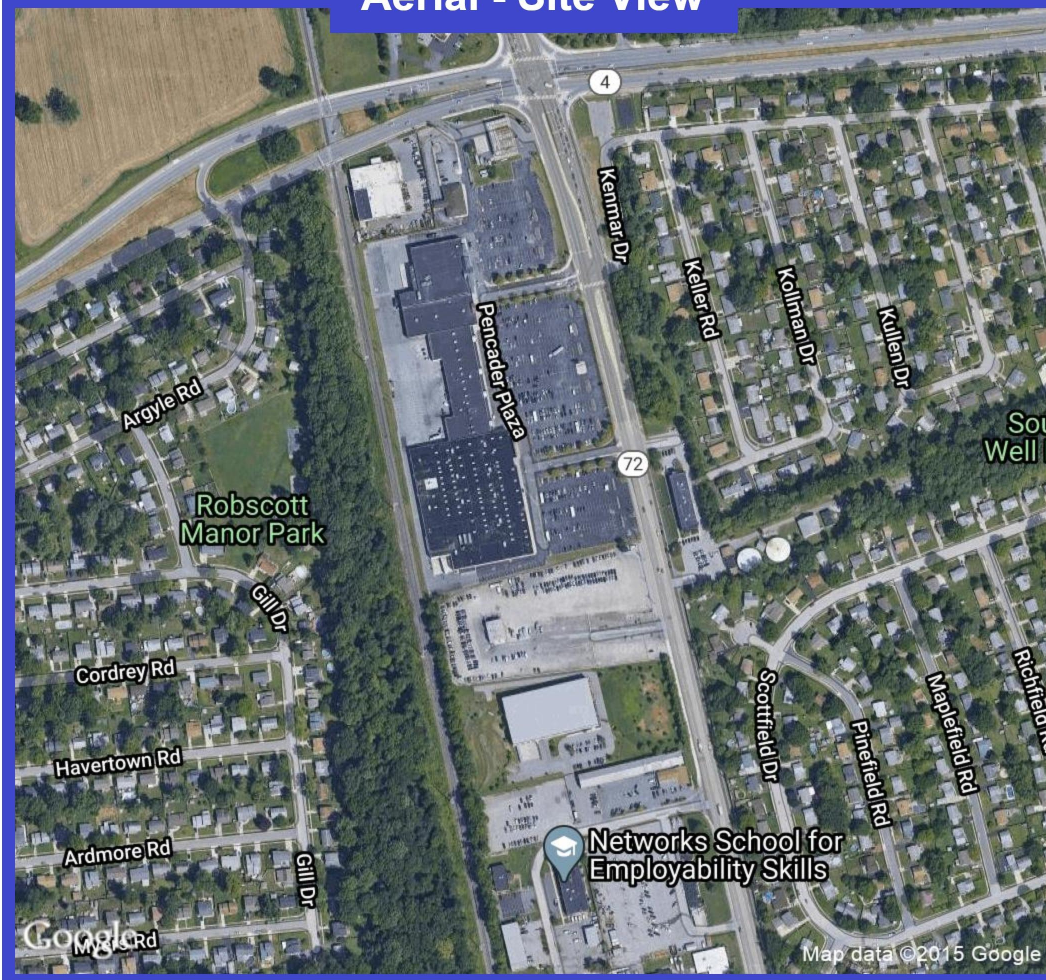
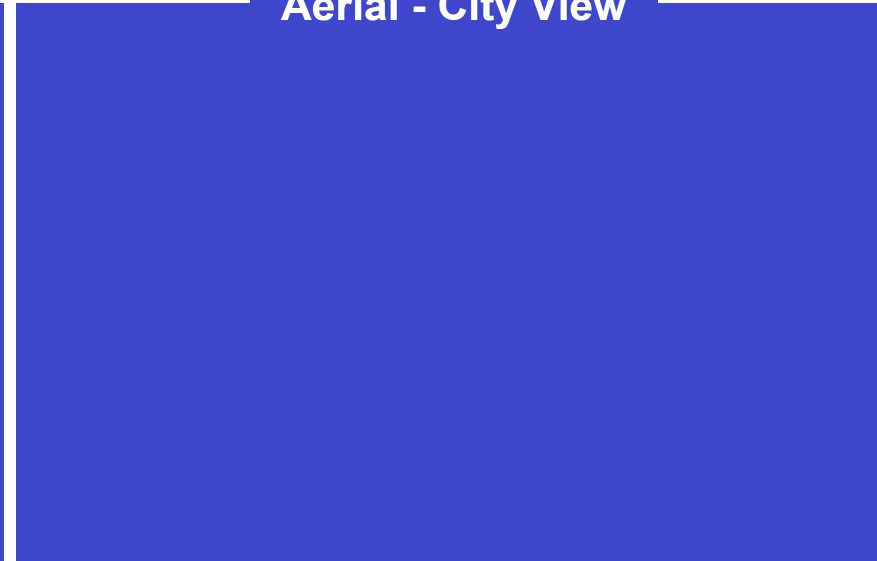


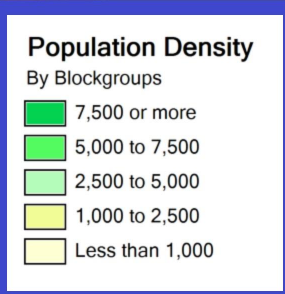
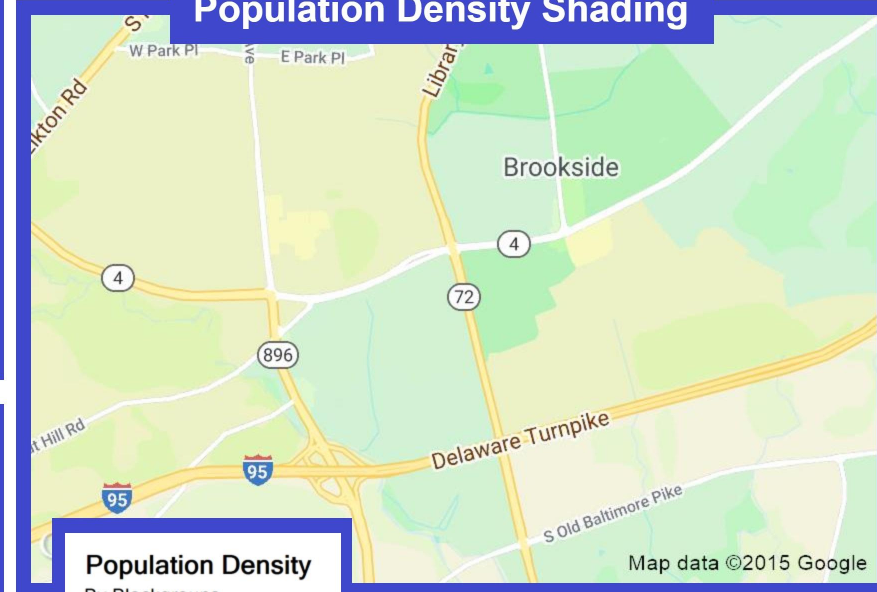
Aerial - Site View



Aerial - City View



Population Density Shading



Demographic Data	1 mi radius	3 mi radius	5 mi radius
Population (2020)	6,142	81,935	170,492
Households (2020)	2,329	29,807	64,999
Median household income (2020)	\$71,817	\$66,108	\$70,881
Total Employees	4,762	31,883	85,443
Total Establishments	497	2,905	7,130

This map was produced using data from private and government sources deemed to be reliable. The information herein is provided without representation or warranty.