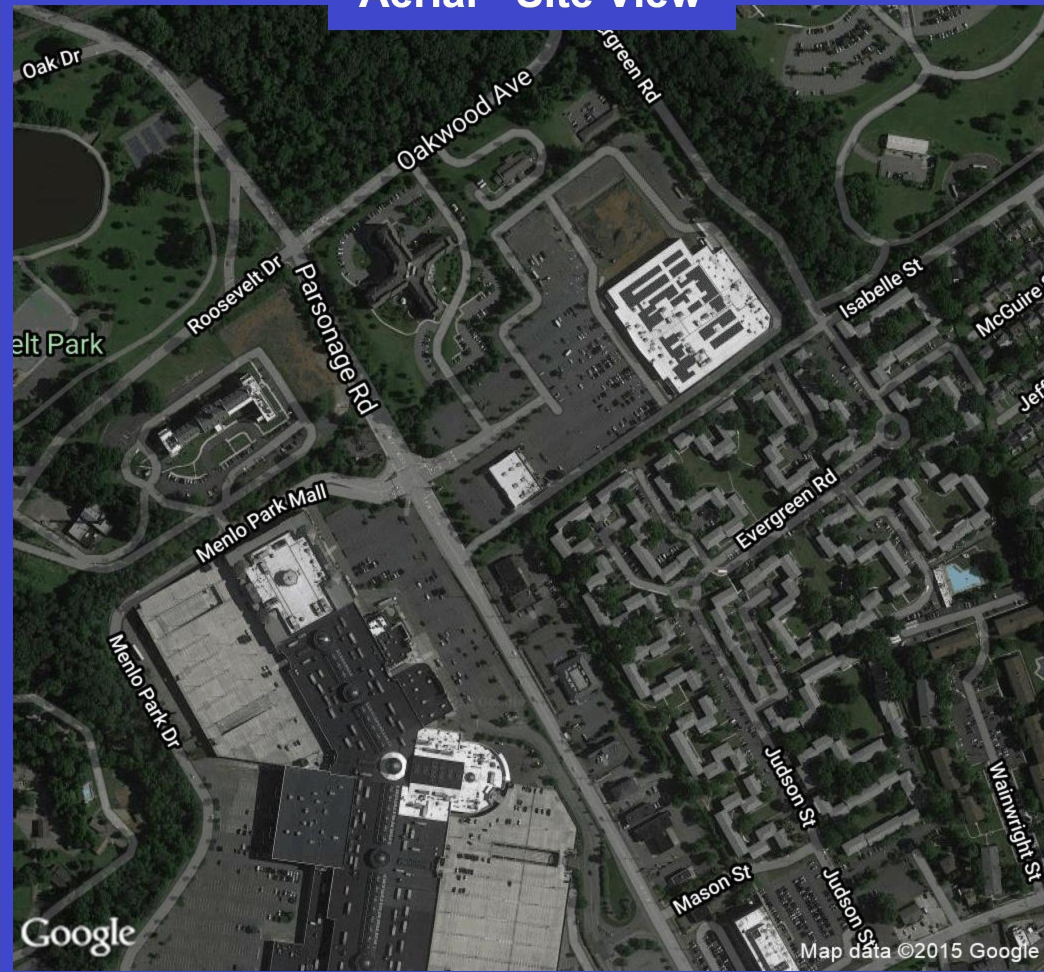
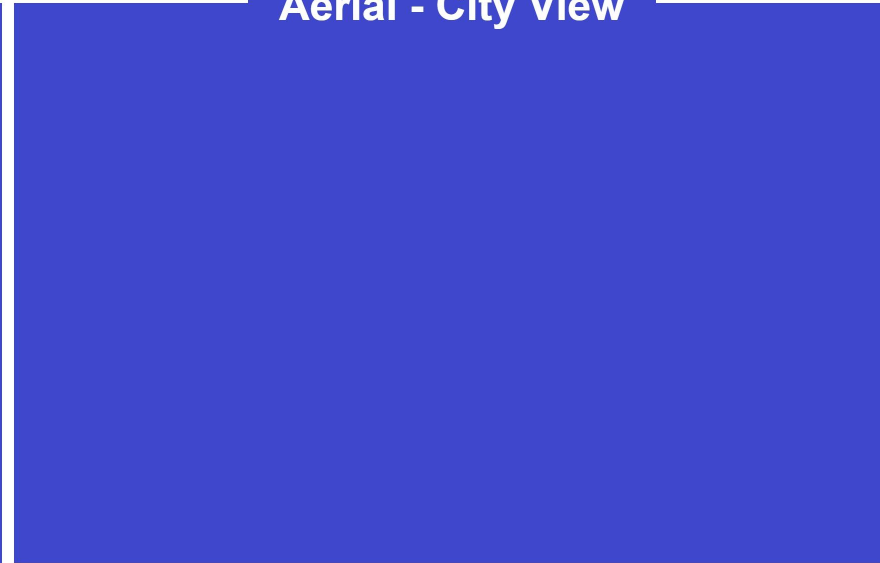


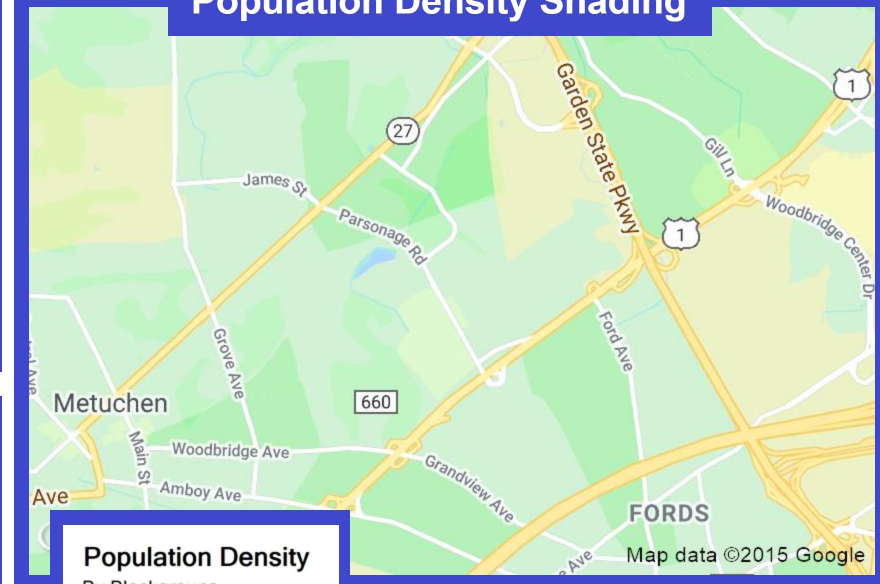
Aerial - Site View



Aerial - City View



Population Density Shading



Population Density

By Blockgroups

- 7,500 or more
- 5,000 to 7,500
- 2,500 to 5,000
- 1,000 to 2,500
- Less than 1,000

Demographic Data

	1 mi radius	3 mi radius	5 mi radius
Population (2020)	16,321	119,476	310,746
Households (2020)	6,156	44,072	109,643
Median household income (2020)	\$97,220	\$106,873	\$96,209
Total Employees	15,467	76,347	150,976
Total Establishments	995	5,986	12,684