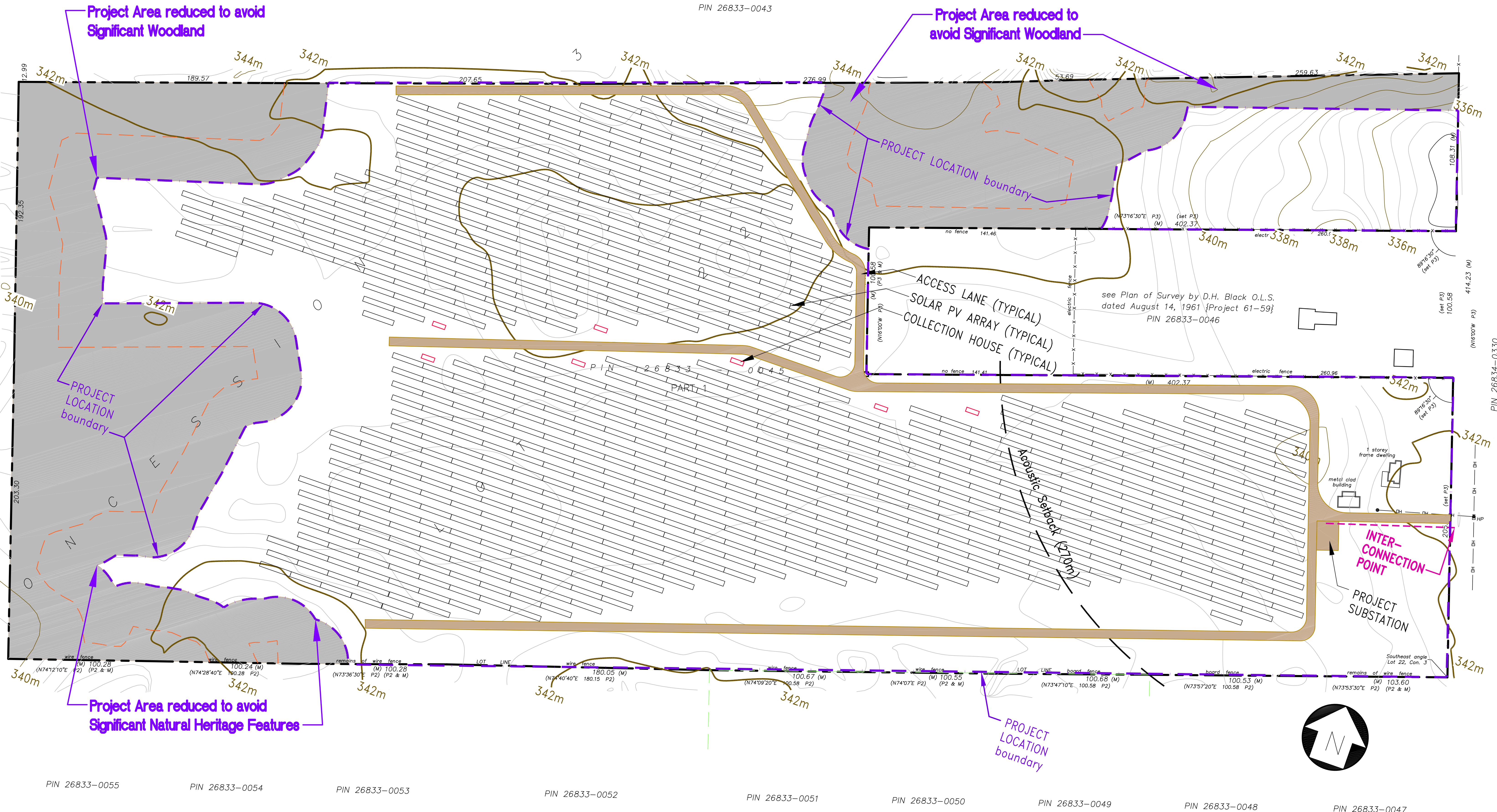


see Plan of Survey by D.H. Black O.L.S. dated May 5, 1965 (Project 65-68)
PIN 26833-0043



ORIGINAL ROAD ALLOWANCE BETWEEN CONCESSIONS 3 and 4

NOTE: The intent of this drawing is to illustrate proposed development limitations and major project components. The facilities within the "Project Location" are conceptual in nature and subject to change as the project design is further refined and engineered.

Site Plan with Existing Topography
for Proposed Solar Energy Facility: "Roseplain"
July 24, 2012 (DRAFT) © Penn Energy Renewables, Ltd.

