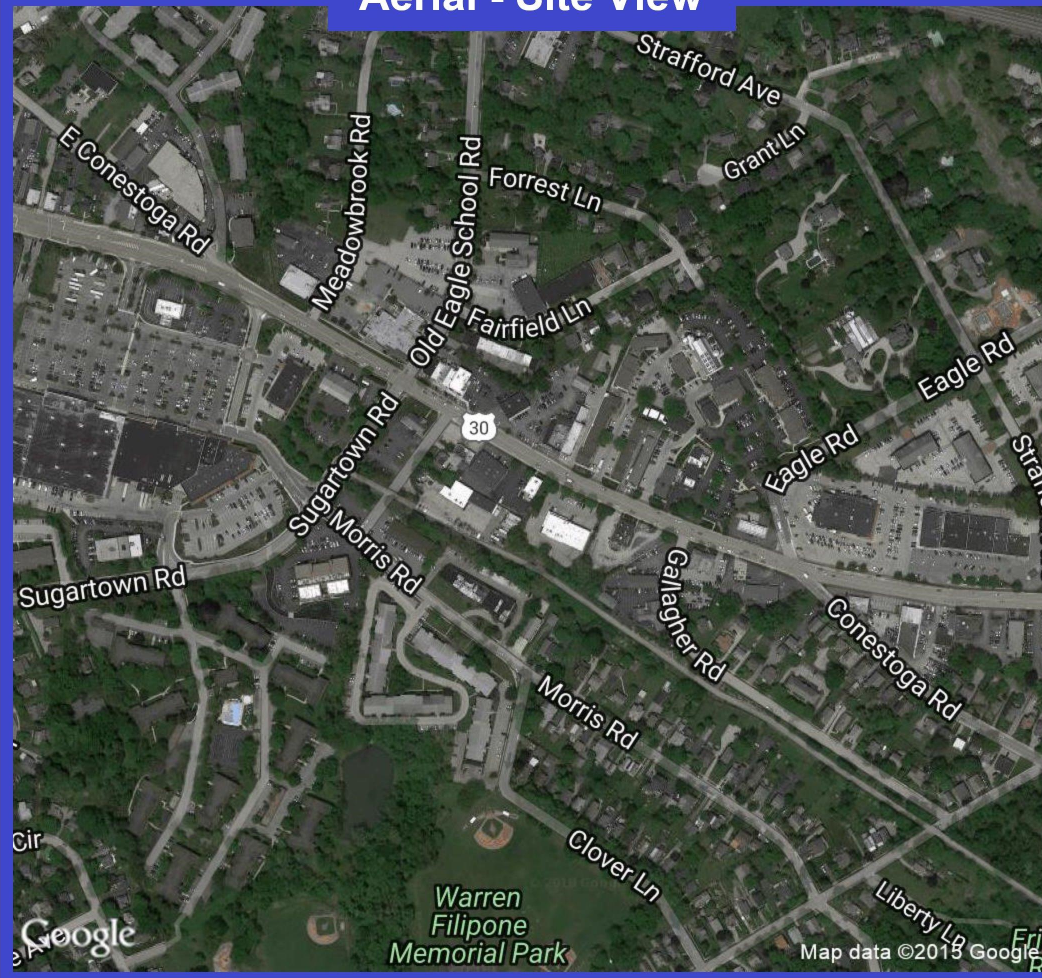
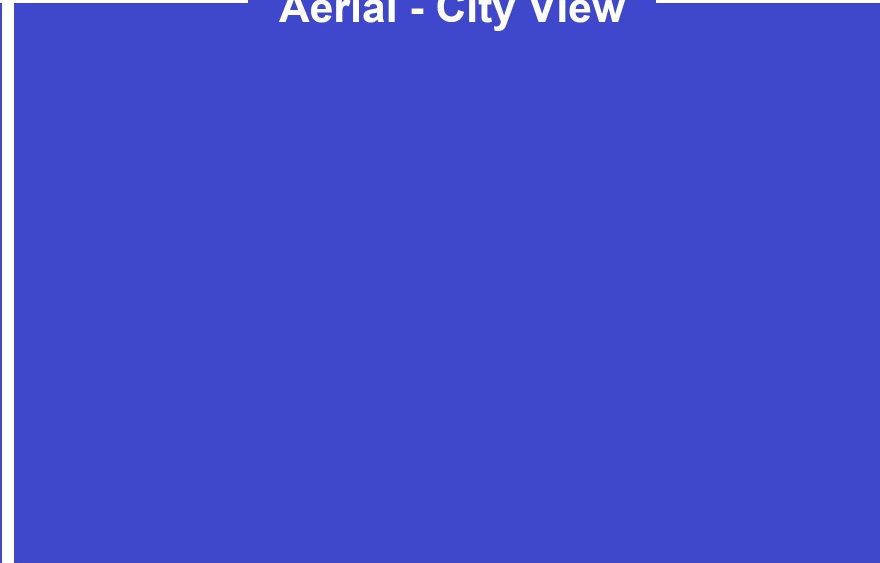


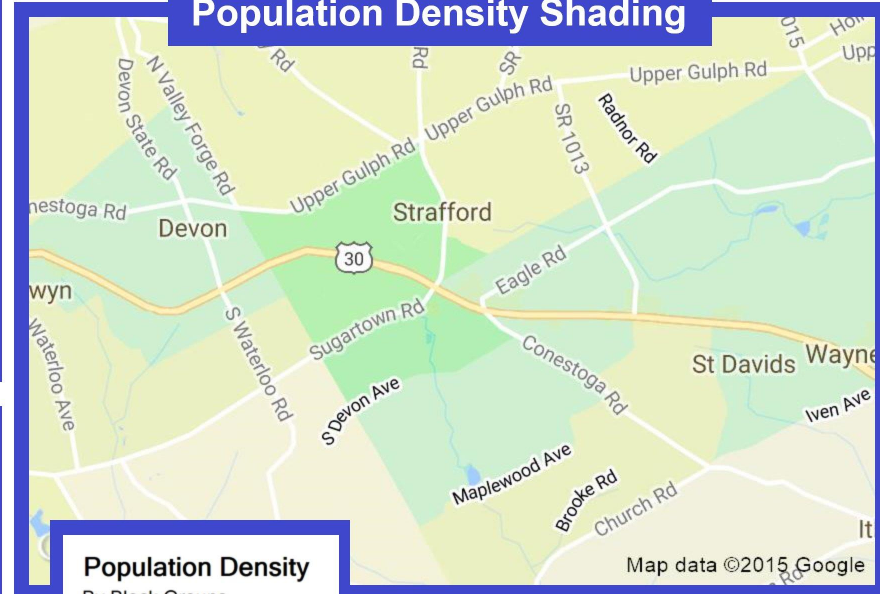
Aerial - Site View



Aerial - City View



Population Density Shading



Population Density

By Block Groups

- 7,500 or More
- 5,000 to 7,500
- 2,500 to 5,000
- 1,000 to 2,500
- Less than 1,000

Demographic Data

	1 mi radius	3 mi radius	5 mi radius
Population (2018)	10,830	46,629	136,325
Households (2018)	4,455	17,341	52,957
Median household income (2018)	\$131,485	\$144,044	\$123,910
Total Employees	5,907	50,109	129,793
Total Establishments	802	3,740	9,634